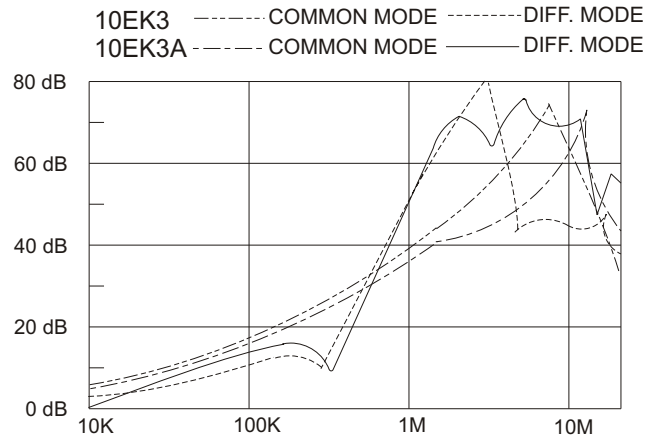
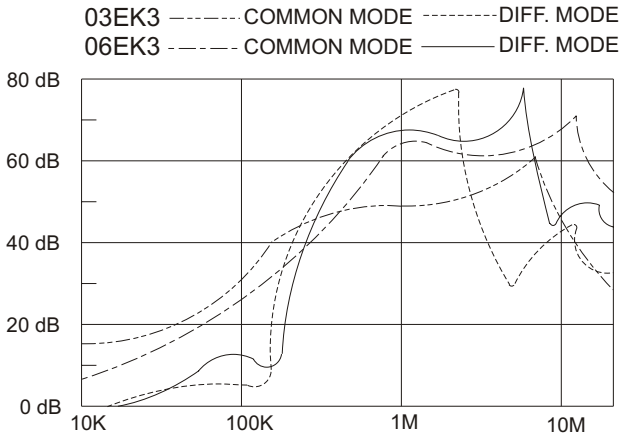


INSERTION LOSS (TYPICAL)

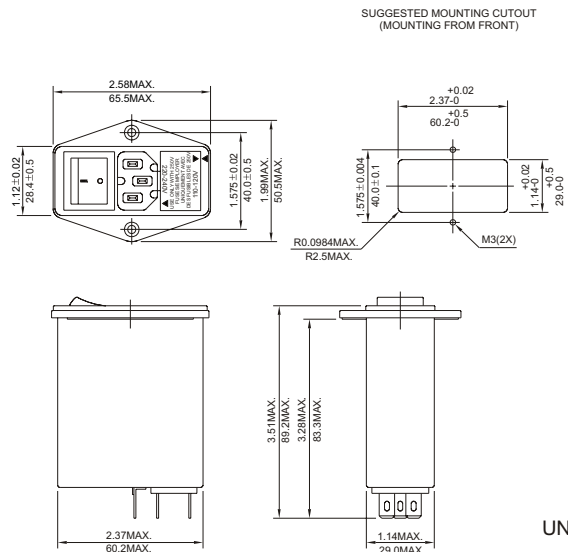


MINIMUM INSERTION LOSS IN dB

COMMON MODE (L-G) IN 50 OHM SYSTEM						
CURRENT RATING	FREQUENCY-MHz					
	.15	.50	1.0	5.0	10	30
3A	32	38	38	38	38	25
6A	20	30	35	40	40	30
•10A	15	25	30	40	40	30
3A(A,SA)	30	40	40	40	45	25
6A(A,SA)	20	30	35	40	40	30
•10A(A,SA)	20	25	30	45	45	30
DIFFERENTIAL MODE (L-L) IN 50 OHM SYSTEM						
3A	20	50	55	40	40	30
6A	5	40	50	40	40	40
•10A	3	35	45	40	40	30
3A(A,SA)	20	50	50	50	45	30
6A(A,SA)	5	40	50	40	40	40
•10A(A,SA)	3	35	45	45	40	30

• CSA approved 6A at 125/250VAC; VDE-6A/250VAC

MECHANICAL CONSTRUCTION



UNIT: INCH
mm

POWER ENTRY MODULE FILTERS