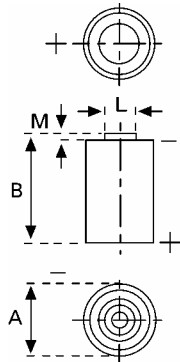


Data Sheet



Type Number 6127
Designation IEC ---
System Li-Manganese dioxide / Organic Electrolyte

UL Recognition:..... MH13654 (N)
Nominal Voltage 3 V
Typical Capacity C 950 mAh
 Load 5.6 kOhm, at 20°C down to 2 V

Weight (approx.) 11,5 g
Volume 5 ccm
Coding..... Date of Manufacturing Quater/Year

Temperature Ranges min max.
 Storage -55°C 75 °C
 Discharge -30°C 75°C

Dimensions min max.
 Diameter (A) 14,45 14,75
 Height (B) 24,9 25,1
 Shoulder Diameter[L]..... 7
 Shoulder Height [M]..... 0,6

Segment Electronic

Main Applications Electronic

Typical Capacities (at 20°C)

Discharge Type	Load	End Voltage:	2.0 V
Continuous 24h/d,7d/w	5600 Ω	Time:	1860 h
		Capacity [mAh]:	950
		Energy [mWh]:	2700
Continuous 24h/d,7d/w	2000 Ω	Time:	670 h
		Capacity [mAh]:	930
		Energy [mWh]:	2600
Continuous 24h/d,7d/w	1000 Ω	Time:	335 h
		Capacity [mAh]:	900
		Energy [mWh]:	2400
Constant current	50 μA	Capacity [mAh]:	1000

All Data contained herein is for single cells

For battery applications, performance data may vary from single cell data, depending on specific battery configuration

