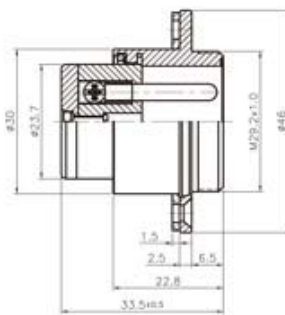
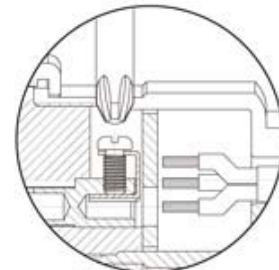


INPUT TYPE



PAT **PLT-303-RN**

大豪电子
电话: 0775-83233025
<http://www.szdahao.com>
<http://www.very-tec.com>



PAT **PLT-303-PN**

(Screw-Lockup-Contact Model 螺絲鎖附型)

No. of contacts	3						
Contacts Configuration	 						
Rated current / voltage	15A 250V						
Operation limit voltage (AC.V.rms)	400						
Withstanding voltage (AC.V.rms) 1 minute	2000						
Insulation resistance (MΩ MIN.) at DC 500V	2000						
Contact resistance (MΩ MAX.) at DC 1A	3						
Solder inter diameter	2.8						